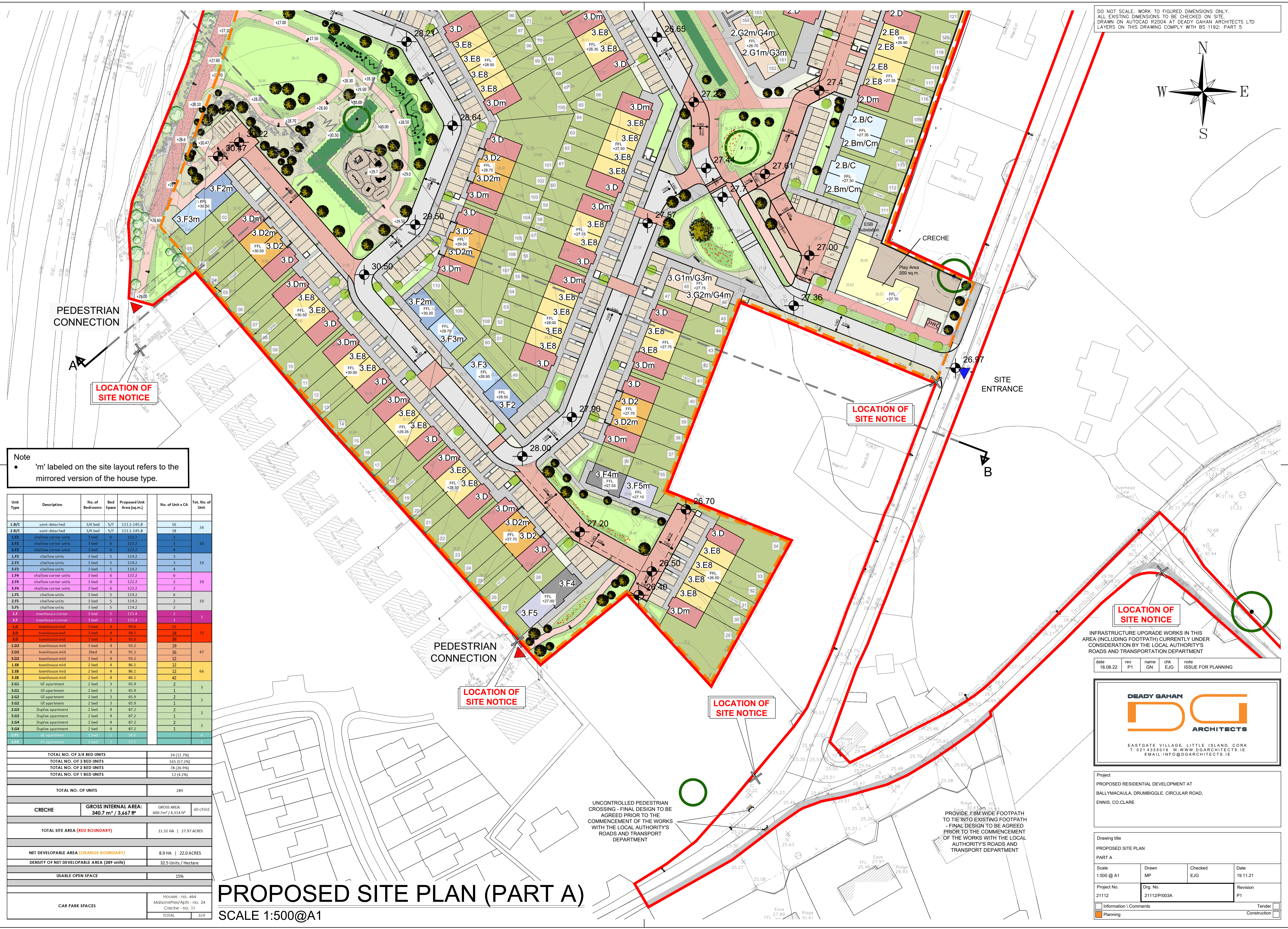
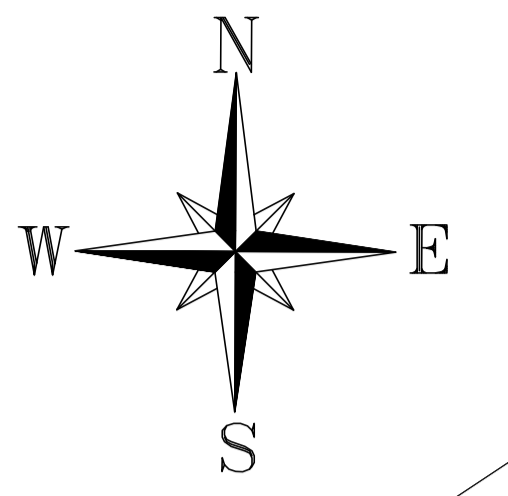


DO NOT SCALE. WORK TO FIGURED DIMENSIONS ONLY.
 ALL EXISTING DIMENSIONS TO BE CHECKED ON SITE.
 DRAWN ON AUTOCAD R2004 AT DEADY GAHAN ARCHITECTS LTD
 LAYERS ON THIS DRAWING COMPLY WITH BS 1192: PART 5



Note
 • 'm' labeled on the site layout refers to the mirrored version of the house type.

Unit Type	Description	No. of Bedrooms	Bed Space	Proposed Unit Area (sq.m)	No. of Unit x CA	Tot. No. of Units
1.B/C	semi-detached	3/4 bed	5/7	111.1-145.8	16	34
2.B/C	shallow corner units	3 bed	5/7	111.1-145.8	18	3
2.F2	shallow corner units	3 bed	6	122.2	3	10
3.F2	shallow corner units	3 bed	6	122.2	4	
1.F3	shallow units	3 bed	5	114.2	3	10
2.F3	shallow units	3 bed	5	114.2	3	
3.F3	shallow units	3 bed	5	114.2	4	
1.F4	shallow corner units	3 bed	6	122.2	6	10
2.F4	shallow corner units	3 bed	6	122.2	2	
3.F4	shallow corner units	3 bed	6	122.2	2	
1.F5	shallow units	3 bed	5	114.2	6	10
2.F5	shallow units	3 bed	5	114.2	2	
3.F5	shallow units	3 bed	5	114.2	2	
1.F	townhouse corner	3 bed	5	115.4	2	3
3.F	townhouse corner	3 bed	5	115.4	1	
1.D	townhouse end	3 bed	4	95.6	22	75
2.D	townhouse end	3 bed	4	94.1	14	
3.D	townhouse end	3 bed	4	95.6	39	
1.D2	townhouse mid	3 bed	4	93.2	19	47
2.D2	townhouse mid	3 bed	4	91.1	16	
3.D2	townhouse mid	3 bed	4	93.2	12	
1.E8	townhouse mid	2 bed	4	86.1	12	66
2.E8	townhouse mid	2 bed	4	86.1	12	
3.E8	townhouse mid	2 bed	4	86.1	42	
2.G1	Gf apartment	2 bed	3	65.9	2	3
2.G2	Gf apartment	2 bed	3	65.9	2	3
3.G2	Gf apartment	2 bed	3	65.9	1	
2.G3	Duplex apartment	2 bed	4	87.2	2	3
3.G3	Duplex apartment	2 bed	4	87.2	1	
2.G4	Duplex apartment	2 bed	4	87.2	2	3
3.G4	Duplex apartment	2 bed	4	87.2	1	
2.P1	Gf apartment	1 bed	2	54.0	6	6
2.P2	Gf apartment	1 bed	2	57.5	6	6

TOTAL NO. OF 3/4 BED UNITS	34 (11.7%)
TOTAL NO. OF 3 BED UNITS	165 (57.2%)
TOTAL NO. OF 2 BED UNITS	78 (26.9%)
TOTAL NO. OF 1 BED UNITS	12 (4.2%)
TOTAL NO. OF UNITS	289
CRECHE	GROSS INTERNAL AREA: 340.7 m ² / 3,667 ft ² GROSS AREA: 400.7 m ² / 4,314 ft ² 60-child
TOTAL SITE AREA (RED BOUNDARY)	11.32 HA 27.97 ACRES
NET DEVELOPABLE AREA (ORANGE BOUNDARY)	8.9 HA 22.0 ACRES
DENSITY OF NET DEVELOPABLE AREA (289 units)	32.5 Units / Hectare
USABLE OPEN SPACE	15%
CAR PARK SPACES	Houses - no. 464 Maisonnets/Apts - no. 24 Creche - no. 11 TOTAL 519

PROPOSED SITE PLAN (PART A)

SCALE 1:500@A1

LOCATION OF SITE NOTICE
 INFRASTRUCTURE UPGRADE WORKS IN THIS AREA (INCLUDING FOOTPATH) CURRENTLY UNDER CONSIDERATION BY THE LOCAL AUTHORITY'S ROADS AND TRANSPORTATION DEPARTMENT

date	18.08.22	rev	P1	name	GN	chk	EJG	note	ISSUE FOR PLANNING
------	----------	-----	----	------	----	-----	-----	------	--------------------

DEADY GAHAN ARCHITECTS

EASTGATE VILLAGE, LITTLE ISLAND, CORK
 T: 021 4388016 | W: WWW.DGARCHITECTS.IE
 EMAIL: INFO@DGARCHITECTS.IE

Project
 PROPOSED RESIDENTIAL DEVELOPMENT AT
 BALLYMACAULA, DRUMBIGGLE, CIRCULAR ROAD,
 ENNIS, CO. CLARE

Drawing title			
PROPOSED SITE PLAN			
PART A			
Scale	Drawn	Checked	Date
1:500 @ A1	MP	EJG	19.11.21
Project No.	Dwg. No.	Revision	
21112	21112/P/003A	P1	
Information / Comments	Tender		
Planning	Construction		

UNCONTROLLED PEDESTRIAN CROSSING - FINAL DESIGN TO BE AGREED PRIOR TO THE COMMENCEMENT OF THE WORKS WITH THE LOCAL AUTHORITY'S ROADS AND TRANSPORT DEPARTMENT

PROVIDE 1.8M WIDE FOOTPATH TO TIE INTO EXISTING FOOTPATH - FINAL DESIGN TO BE AGREED PRIOR TO THE COMMENCEMENT OF THE WORKS WITH THE LOCAL AUTHORITY'S ROADS AND TRANSPORT DEPARTMENT